

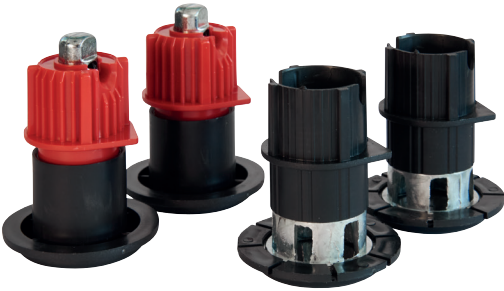
437 □ P4 00 40 F0

06
07
08
10
Hcm

OPTIONAL

REAR
ART. 437

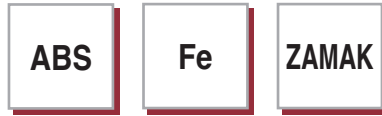
FRONT
ART. 440



2 x

2 x

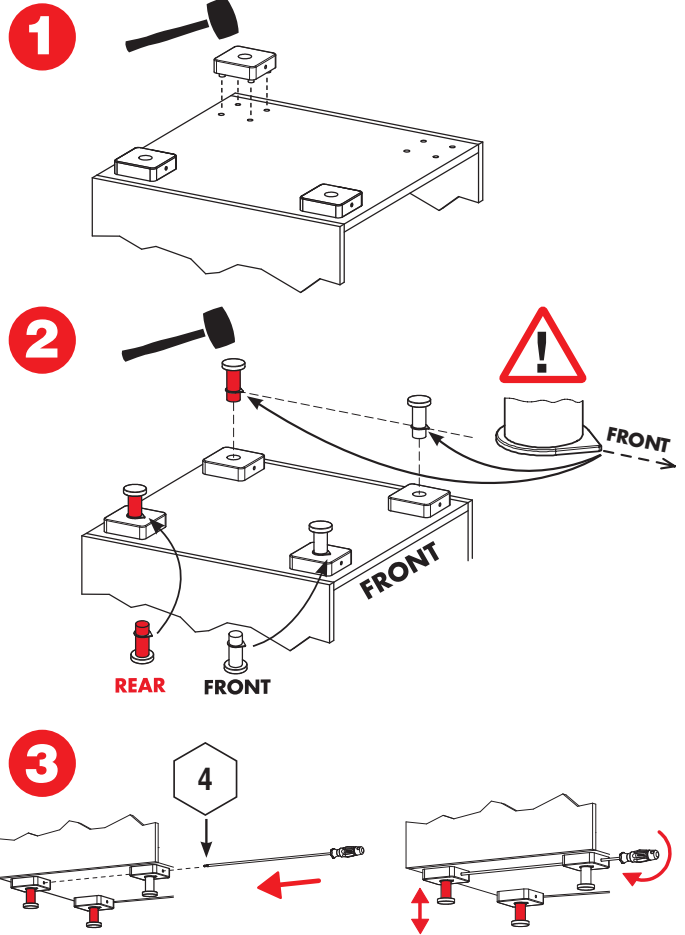
1 x



New

50

100



9 4 809 68 C1 04 00 641

9	202 600 H 8-10	203 601 H 8-10	204 602 H 10	225 606 H 8-10
	228 611 H 8-10	230 612-613 H 6-10	230 612-613 H 8-10	235 614 H 6-10

9	226 10 24 AL P2 608
	226 13 N2 00 00 609
	H 6-10
9	226 00 24 AL P2 608
	226 00 N2 00 00 607
	226 15 24 AL P2 609
H 7-10	

2	840 00 P2 H2 16 75
	840 00 P2 H2 20 76
	840 00 P2 H2 A6 74
	840 00 P2 J2 RF 77
	840 00 P2 J6 RF 78
	840 00 P2 M4 RF 79
	840 00 P2 M6 RF 80
	840 00 P2 XA RF 81
	840 00 P2 X3 RF 82
	840 00 P2 X7 RF 83

9 809 □ Z1 M8 00 638