

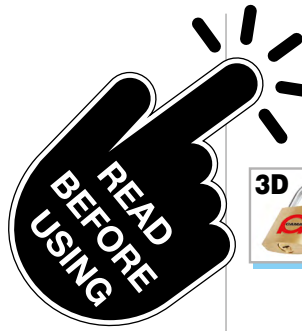
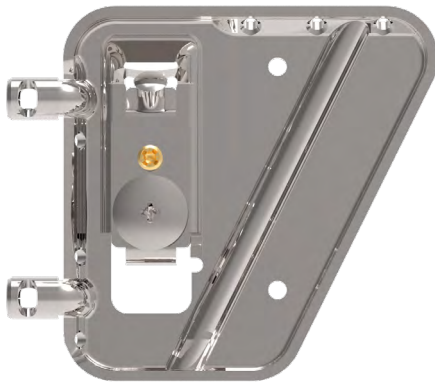
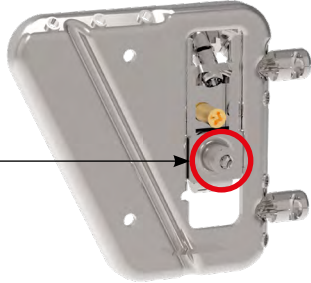
# 819 AS E1 90



DX  
SX



**New**



**FOR YOUR SAFETY WARNING**

[www.camar.it/warning](http://www.camar.it/warning)

3D 8mm 8mm 4 Fe

50 1500 100

**1** **2**

**3a**

**3b**

Screw the golden bolt in to its limit point.  
 Avvitare fino a fine corsa.

**3c**

After assembly, verify that the anti-drop system has been activated.  
 Verificare dopo il montaggio l'avvenuta attivazione del sistema antigancio.

9

BRACKET  
PLATE  
BP  
16mm

897 AS Z1 10 71 694

9

MIN. 21

810 B2 45 12 643

9

MIN. 19

810 B4 45 12 643

9

MIN. 23

810 P0 45 12 644