

821 20 Z1 IN



DX
SX



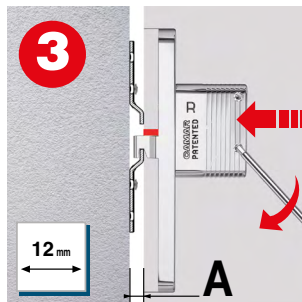
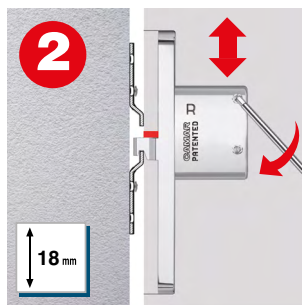
FOR YOUR SAFETY WARNING

kg ?

www.camar.it/warning

3D	12 mm	18 mm	5+2 mm	4
	Fe	ZAMAK		www.camar.it

50	1800	100
----	------	-----



A = 9-12 mm

A = 0-9 mm

3D After assembly, verify that the anti-drop system has been activated.

3D Verificare dopo il montaggio l'avvenuta attivazione del sistema antisgancio.

1 **306**
40-43

9 **810 15** **06 08** 652

9 **895 AS Z1 15 12** 689

9 **4** **809**
638-641